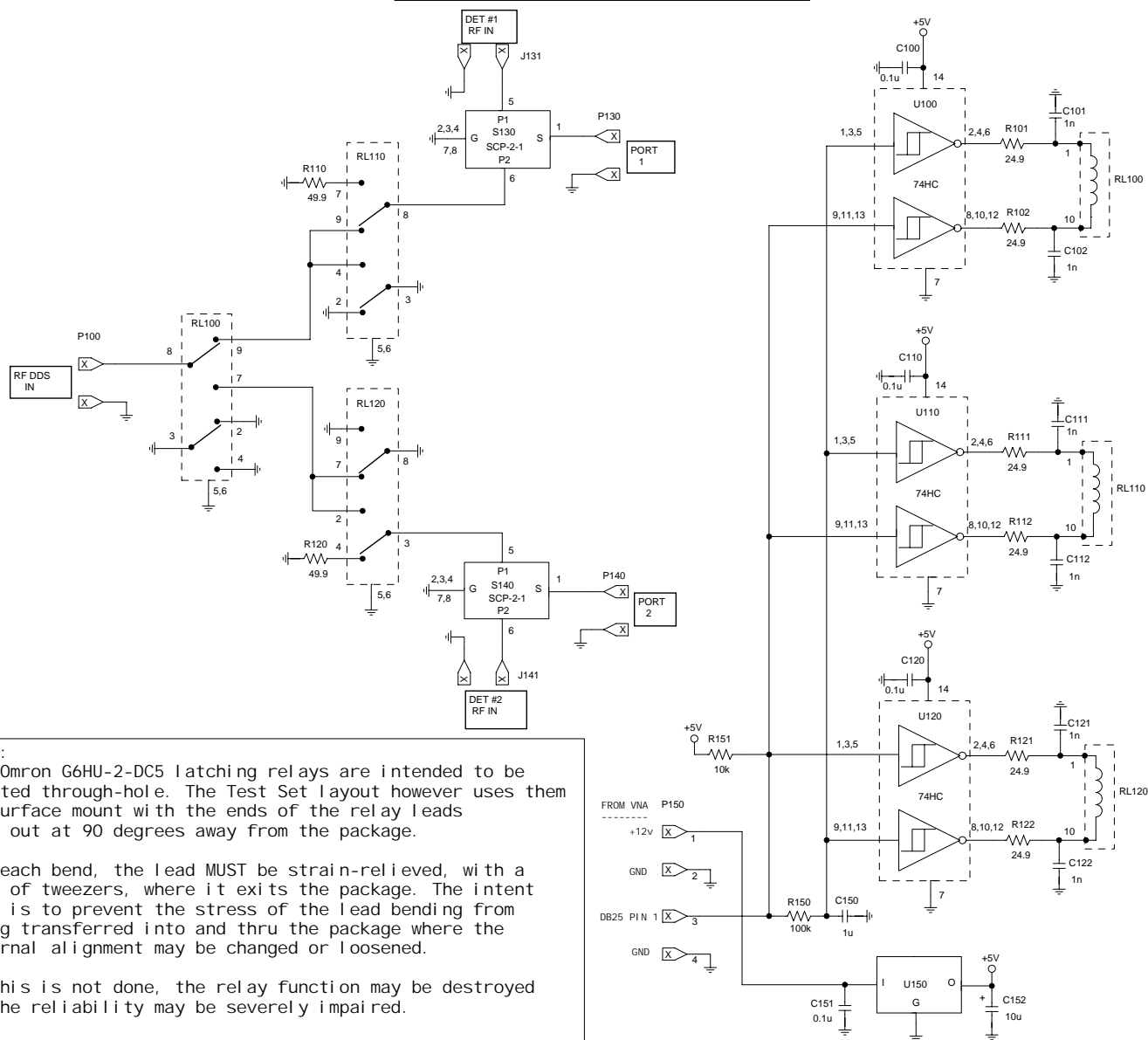


Simple HF S-Parameter Test Set



NOTE:

The Omron G6HU-2-DC5 latching relays are intended to be mounted through-hole. The Test Set layout however uses them as surface mount with the ends of the relay leads bent out at 90 degrees away from the package.

For each bend, the lead MUST be strain-relieved, with a pair of tweezers, where it exits the package. The intent here is to prevent the stress of the lead bending from being transferred into and thru the package where the internal alignment may be changed or loosened.

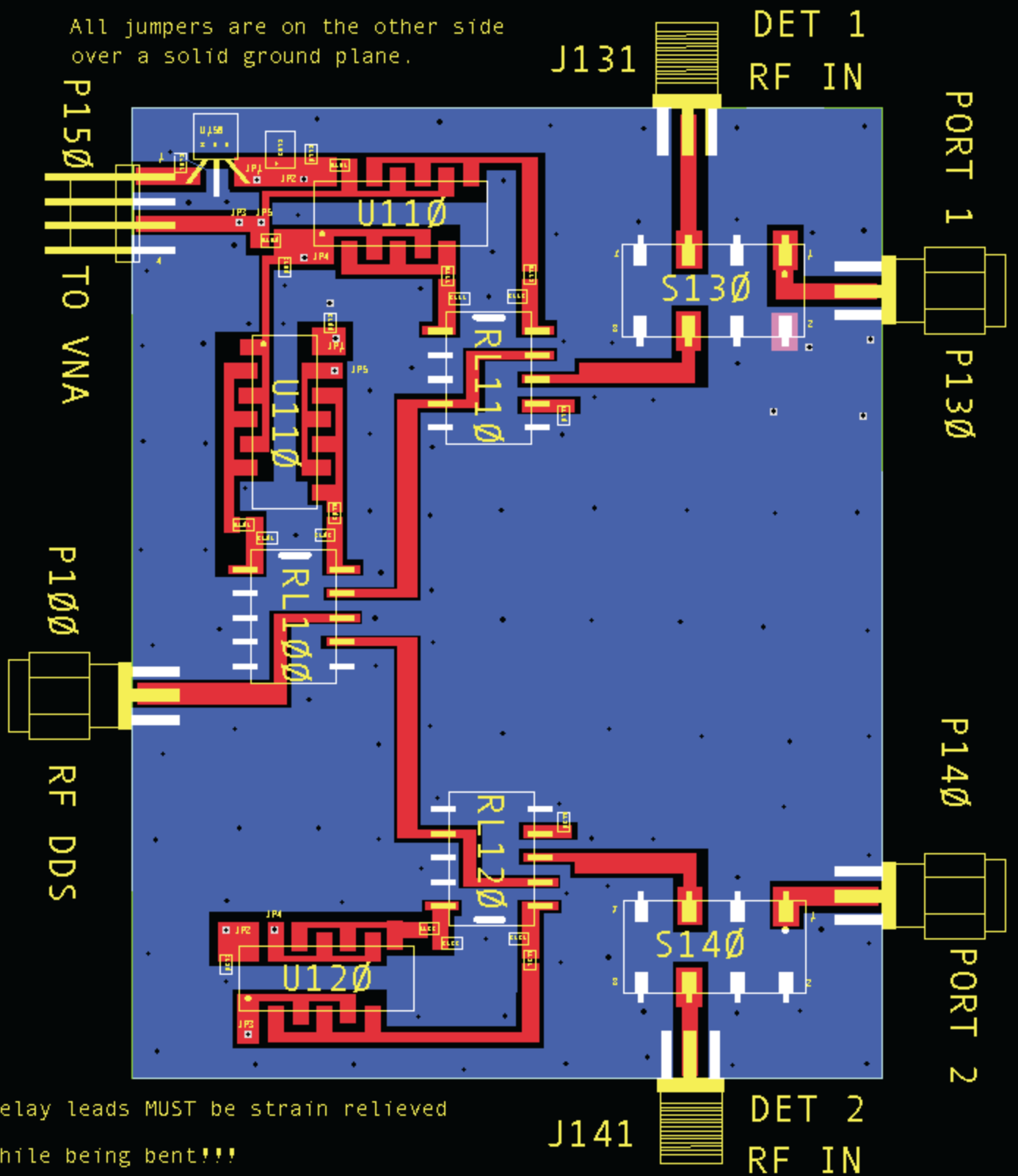
If this is not done, the relay function may be destroyed or the reliability may be severely impaired.

Parts List:

Designation	Description	Package	Manufacturer	Mfg P/N	Vendor	Vendor P/N
C100, C110, C120, C151	0.1 uF/50V/X7R/10%	0805	Panasonic	ECJ-2YBH104K	Di gi -Key	PCC1840CT-ND
C101, C102, C111, C112, C121, C122	1000 pF/50V/NPO/5%	0805	Panasonic	ECJ-2VC1H102J	Di gi -Key	PCC102CGCT-ND
C150	1 uF/16V/X5R/10%	0805	Panasonic	ECJ-2FB1C105K	Di gi -Key	PCC2249CT-ND
C152	10 uF/16V/Tant/20%	EIA B	Panasonic	ECS-T1CX106R	Di gi -Key	PCS3106CT-ND
J131, J141	SMA jack(F)	PCB	Amphenol	901-144-8RFX	Mouser	523-901-144-8RFX
P100, P130, P140	SMA plug(M)	PCB	Amphenol	901-9895-RFX	Mouser	523-901-9895-RFX
P150*	4 Pos. Pol. Recept.	0.1" SIP	Amp/Tyco	641213-4	Di gi -Key	A23899-ND
R101, R102, R111, R112, R121, R122	24. 9/0. 1w/1%	0805	Panasonic	ERJ-6ENF24R9V	Di gi -Key	P24. 9CCT-ND
R110, R120	49. 9/0. 1w/1%	0805	Panasonic	ERJ-6ENF49R9V	Di gi -Key	P49. 9CCT-ND
R150	100k/0. 1w/1%	0805	Panasonic	ERJ-6ENF1003V	Di gi -Key	P100KCCT-ND
R151	10k/0. 1w/1%	0805	Panasonic	ERJ-6ENF1002V	Di gi -Key	P10.0KCCT-ND
RL100, RL110, RL120	Latching DPDT Relay	Thru-hole	Omron	G6HU-2-DC5	Mouser	653-G6HU-2-DC5
S130, S140	2-way pwr splitter	YY101	Mini-Circuits	SCP-2-1	see mfg.	
U100, U110, U120	Hex Schmitt Inv.	DIP-14	Philips	74HC14N	Di gi -Key	568-1402-5-ND
U150	+5V reg.	T0-92	Texas Inst.	UA78L05ACLPR	Di gi -Key	296-1365-1-ND

* Also needs mating connector & contacts - see VNA Part 2.

All jumpers are on the other side
over a solid ground plane.



Relay leads MUST be strain relieved
while being bent!!!